

**23 APRIL
- 2 MAY**

DOWN THE ROMAN...
from past to present

**A GENERATIONAL EXHIBITION
ABOUT AND ON ROMAN ROAD
WITH WORK OF LOCAL AND
VISITING ARTISTS IN PARTNERSHIP
WITH ROMAN ROAD BUSINESSES
AND COMMUNITY GROUPS**

**OPENING SATURDAY
23 APRIL 2016**

**AT THE INTERACTIVE HUB, JUST NEXT
TO THE ROMAN ROAD YARD MARKET
WITH WARM SOUP AND DRINKS
PLEASE SEE INSIDE FOR INDIVIDUAL
OPENING TIMES**



☐ LUCY SCHOFIELD *



FOLLOW ASTERISK

@THE OLD HAND AND

FLOWER PUB - 72 Parnell Road

@THE SAUCY KIPPER - E3 2RW

@INCI FOOD STORE - E3 2RN

@THE CITY BRIDGE HOTEL - E2 0QN

@G.KELLY PIE SHOP - E3 5ES

@THE ALBERT - E3 5EL

@BAIRSTOW EVES - E3 5LU

@DOMINO'S PIZZA - E3 5LX

@ ELEANOR ARMS

f LOUISE GRIDLEY

460 Old Ford Rd, London
E3 5JP

@ INTERACT HUB

e JAIRO ZALDUA AND NICOLA GREEN

OPENING OF EXHIBITION - 23 APRIL (NOON-4PM)

InterAct, Carpark, Ford Road, E3 5NS

@THE CHESTERFIELD

m GINI WADE

n DAN JONES

'GENERATIONS OF
STORIES' - THURSDAY 28 7-9PM
(SEE EVENT SECTION)

345 Roman Rd, London
E3 5QR

@ HAIRDRESSER

EDWARD FIRTH

581 Roman Rd, London E3 5EL

@ ROMAN ROAD HUT

d CASS STUDENTS

p CARLOTTA NOVELLA

Hut, InterAct Hub, Carpark,
Ford Road, E3 5NS

@ G.KELLY

c PATSY HANS

526 Roman Rd, London E3 5ES

@ KIKI CAFE'

a FARAH ISHAQ

g SPIKE GASCOIGNE

b HANNA VON BEHR

i ELIANA MC ARCHER

516 Roman Road, Bow, London, E3 5ES

@ AGE UK

h PAUL TUCKER

RINGO NIGHT - FRIDAY 29 6-8PM
(SEE EVENT SECTION)

Appian Court Resource
Centre, 87 Parnell Rd,
London E3 2RS

**MAP OF ARTISTS EXHIBITING
IN ROMAN ROAD**

ARTISTS EXHIBITING:

- a FARAH ISHAQ**
'FIVE TIMES AROUND THE SUN' - LINO AND ACRYLIC HAND PULLED PRINTS
'BUBBA' - LINO CUT ON PAPER/SPRAY PAINT ON CANVAS
- b HANNA VON BEHR**
'GENERATION ME' - PHOTOGRAPHIC COLLAGE AND INSTALLATION
- c PATSY HANS**
'CUTLERY WILL OUTLIVE US ALL' - SHOP WINDOW INSTALLATION
- d JOHN CASS ARCHITECTURE STUDENTS**
COMIC BOOKS TELLING THE STORIES OF ROMAN ROAD BUSINESSES OWNERS
- e JAIRO ZALDUA & NICOLA GREEN**
'MY CHILDHOOD'S FAITH' - INSTALLATION
- f LOUISE GRIDLEY**
'FROZEN MOMENTS' - PAINTINGS (BACK ROOM)
- g SPIKE GASCOIGNE**
'GENERATION'
- h PAUL TUCKER**
'HOME FROM HOME' - PHOTOGRAPHY
BINGO NIGHT FRIDAY 29 6-8PM SEE EVENT SECTION ★
- i ELIANA MC ARCHER**
'MOTHERHOOD'
- l EDWARD FIRTH**
'NEWS' - WINDOW PAINTING
- m GINI WADE**
'RE-GENERATION'
- n DAN JONES**
'EAST END GENERATIONS'
'GENERATIONS OF STORIES' - THURSDAY 28 7-9PM (SEE EVENT SECTION) ★★
- o LUCY SCHOFIELD**
'WHERE IS MY BOOZER GONE (WMRG?)'
THE ROMAN ROAD PAST AND PRESENT PUB SOCIAL ADVENTURE
- p CARLOTTA NOVELLA**
'INDUSTRIOUS NEIGHBOURHOOD' - DRAWINGS & PUBLICATIONS

EVENTS:

THURSDAY 28 APRIL, 7-9PM

* EAST END BACKPASSAGES - 'GENERATIONS OF STORIES'

@ THE CHESTERFIELD 345 ROMAN RD, LONDON E3 5QR

JOIN YOUR HOST BAFTA AWARD WINNING WRITER AND STAND-UP
TOUR GUIDE ALAN GILBEY FOR AN HOUR OF TALES LESS TOLD FROM THE
SIDESTREETS OF EAST LONDON SOCIAL HISTORY.
THE ILLUSTRATIVE GENIUS OF LOCAL ARTIST DAN JONES AND THE VERBAL
DEXTERITY OF SEVEN EAST END STORYTELLERS WILL COMBINE IN AN HOUR
OR SO OF SHORT, FUNNY, DRAMATIC, POIGNANT AND EVOCATIVE STORIES
FROM THE AREA, OFTEN TOLD IN SURPRISING WAYS.

LIMITED SPACES - PLEASE ARRIVE EARLY TO ENSURE YOURS.
INFO EMAIL DEB: ESPY17@OUTLOOK.COM

FRIDAY 29 APRIL, 6-8PM

** BINGO NIGHT

@ AGE UK, APPIAN COURT RESOURCE CENTRE, 87 PARNELL RD, LONDON E3 2RS

ORGANISED BY THE COMMUNITY GROUP THE GEEZERS IN COLLABORATION WITH
PUBLIC WORKS GROUP AND AGE UK. WITH GREAT PRIZES AND MUSICAL LIFE
ACCOMPANIMENT BY RAGTIME PIANIST CHRIS HILL.
ALL WELCOME, AND AN EXTRA OPPORTUNITY TO VIEW THE "HOME FROM HOME"
EXHIBITION BY PAUL TUCKER.

INFO: KATJAROSENBERG@HOTMAIL.COM



d

WWW.PUBLICWORKSGROUP.NET

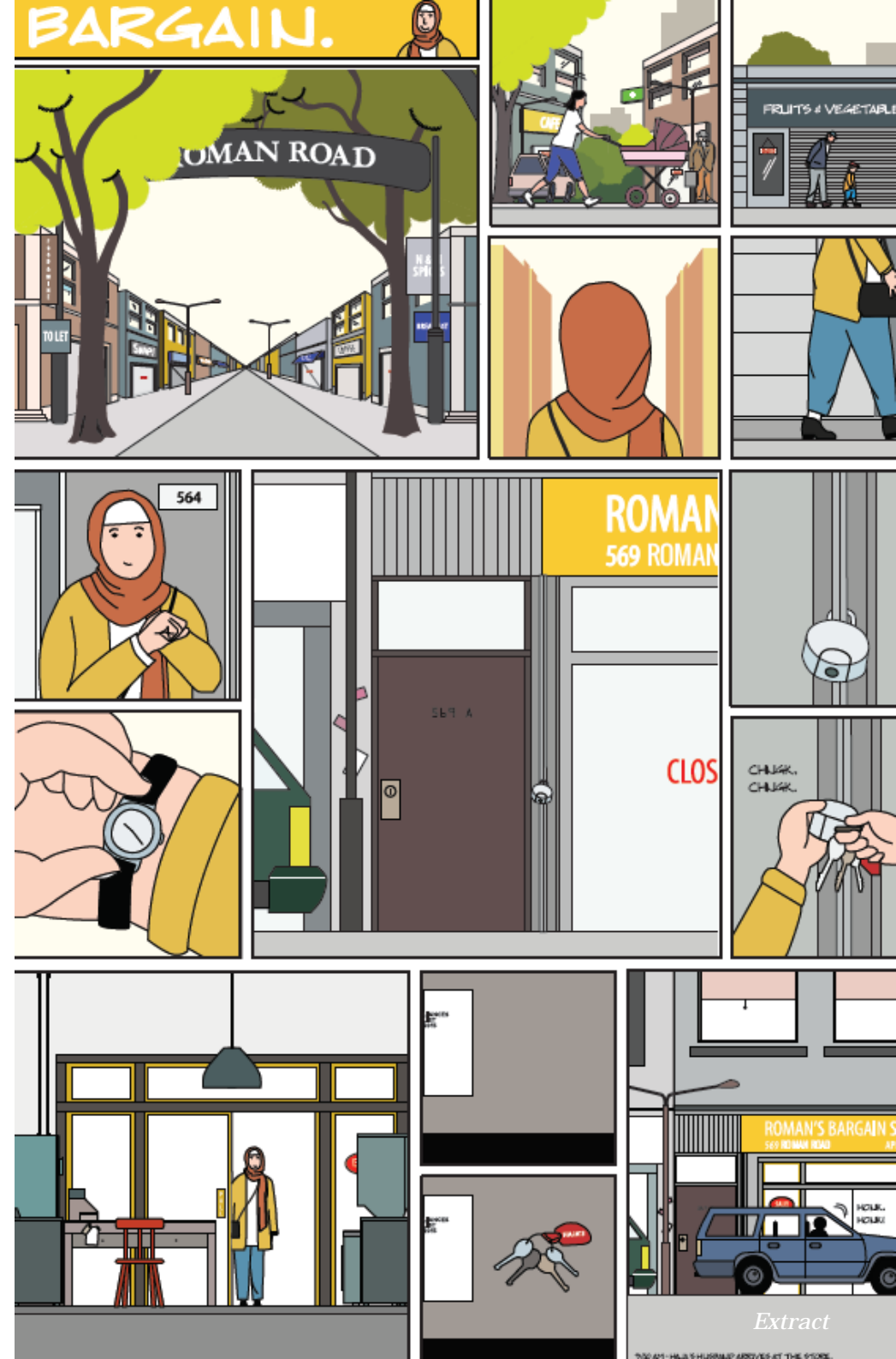
These comic stories produced by John Cass Architecture students under the lead of Torange Khonsari is based on in depth interviews with Roman Road business owners and their families' stories of merging with the area.

BARGAIN + RUMBLE IN THE JUNGLE **LITTLE POLAND + MISFITS + ROMAN** **TACKLE + INTERFLORA TESCO TAKEOVER** **SNAPSHOTS + KATYA'S COFFEE SHOP** **JOHN CASS ARCHITECTURE STUDENTS**

COMIC STORIES

HUT, INTERACT HUB, CARPARK, FORD ROAD, E3 SNS

OPENING TIMES



Extract

1

THE-FURREALIST.TUMBLR.COM

*Two generations,
caught in an exchange.*

With chips and mushy peas.

NEWS EDWARD FIRTH

WINDOW PAINTING

ADILZON BRAZ HAIRDRESSER, 581 ROMAN RD, LONDON E3 5EL

DAYLIGHT HOURS





WWW.LOUISEGRIDLEY.COM

The paintings hold a narrative as they pinpoint a specific time and place in ones' life.

The images are based on moments from my life and document a variety of people and experiences. I feel that the images have the ability to resonate with a wide audience across many generations as they evoke similar memories and experiences.

The images are timeless and universal in the way that they depict the human spirit and the joy of human interaction.

FROZEN MOMENTS **LOUISE GRIDLEY**

SERIES OF PAINTINGS
ELEANOR ARMS
460 OLD FORD RD, LONDON E3 5JP

MON-THU 4PM-11PM
FRI 12NOON-11PM
SAT 12NOON-11PM
SUN 12NOON-10.30PM



Detail



GALDENSTUDIOS.CO.UK

This design is based on a quilt pattern made in America during the 18th and 19th centuries. Made as gifts for special occasions the quilts played an important role in society, with patterns incorporating folk traditions and stories that have passed down over centuries. Their striking boldness in design, composition and colour stands apart from the decorative fashions of the day. A form of abstract expressionism centuries before the American abstract art movement of the 1950s, which featured a majority of male artists, largely steered by commercial interests.

These quilt patterns represent something eternal and fundamental, immune to the whims of fashion and society. We see in them powerful geometric forms and story telling, which have been at the heart of all art and culture throughout history.

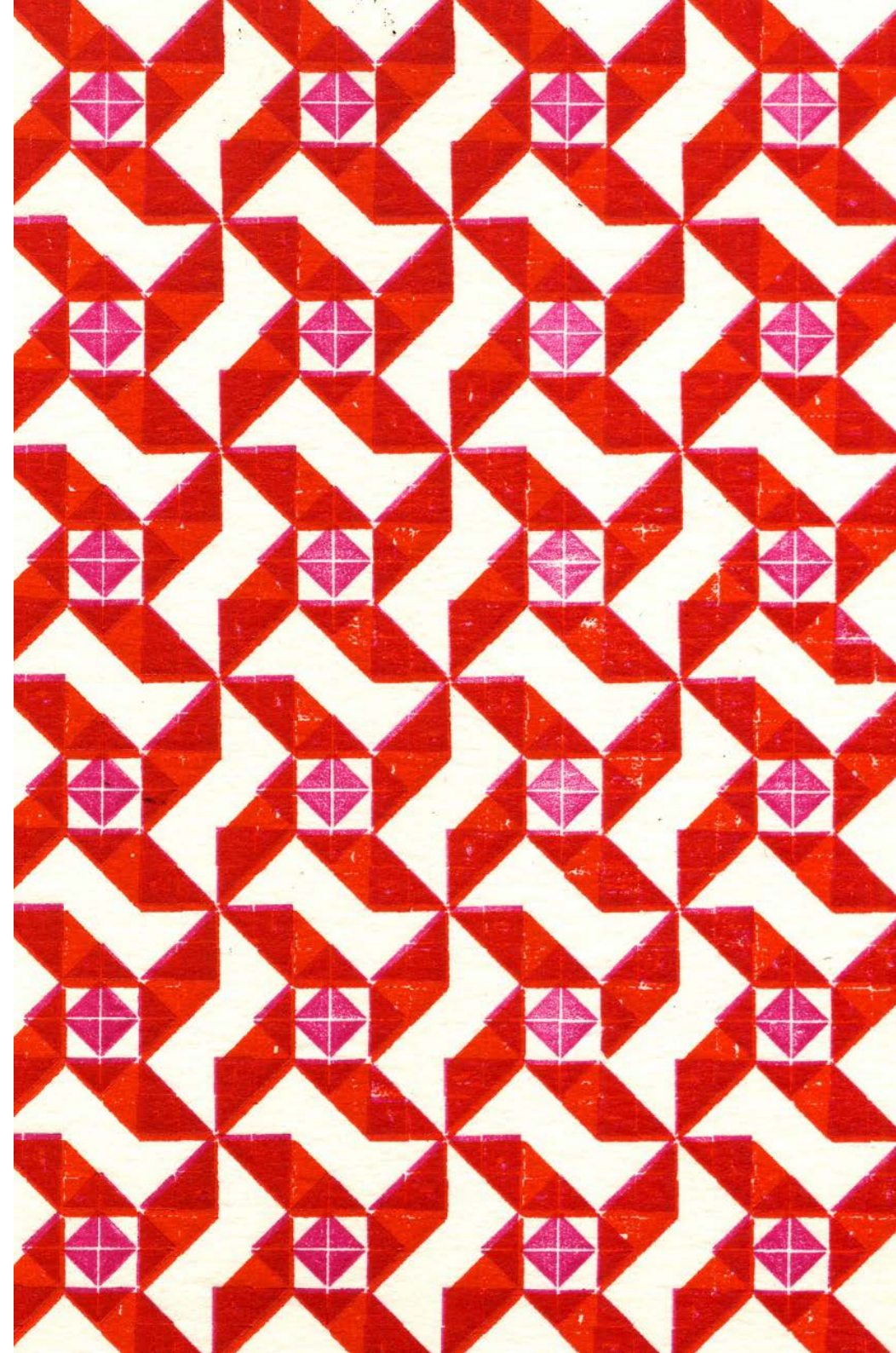
My mother was a quilt designer in her youth, and while looking through her sketchbooks it occurred to me that many of the patterns would translate directly to letterpress printing using geometric ornaments. This print was made using movable lead blocks and then printed by hand in an attempt to retain some of the spirit of the originals.

GENERATIONS SPIKE GASCOIGNE

BLOCK PRINT

KIKI CAFÉ, 516 ROMAN ROAD, BOW, LONDON E3 5ES

8AM-6PM





PATSYHANS@TALKTALK.NET

This installation is an arrangement of cutlery and tools, gathered when clearing out her family home, that were owned by several different generations of her family.

These durable objects remain in the world but the people who used them live on only in photographs and memory.

CUTLERY WILL OUTLIVE US ALL

PATSY HANS

SHOP WINDOW INSTALLATION
G KELLY PIE AND MASH SHOP, 526 ROMAN RD, LONDON E3 5ES
DAYLIGHT HOURS



Detail

a

WWW.FARAHISHAQ.COM

Exploring the role of the grandparent and grandchild. With the higher generation replacing that of the missing generation - her father. Bubba holds the hand firmly looking out to whirly sea of life. The child fully grasping with trust.

The original linocut was enlarged by hand into a stencil for the spray paint version.

Based on a real moment in time.

BUBBA **FARAH ISHAQ**

LINO CUT ON PAPER

KIKI CAFÉ, 516 ROMAN ROAD, BOW, LONDON E3 5ES

8AM-6PM



Detail

a

WWW.FARAHISHAQ.COM

Whilst exploring generations within my family - I was drawn to my daughter's lineage and embarked on what has turned out to be a deeply moving and personal piece.

The piece encompasses a past, present and future of pre-grief and guilt that my child only has one side of a family tree, due to her father removing himself permanently.

As such the maternal side (rhs) blooms well in a permanent Spring time garden, flourishing wildly. The paternal side (lhs) in contrast is jumbled, in the shadows, with life ebbing away with the falling leaves.

Five Years relates to the number of years the tree has grown so far.

FIVE TIMES AROUND THE SUN **FARAH ISHAQ**

LINO AND ACRYLIC HAND PULLED PRINTS

KIKI CAFÉ, 516 ROMAN ROAD, BOW, LONDON E3 5ES

8AM-6PM



Detail

Dan Jones is a well-known local artist and human rights campaigner, best known for his murals and two books of nursery rhymes, "Inky, Pinky, Ponky" and "Mother Goose comes to Cable Street".

Dan Jones presents pictures featuring generations of people from the East End.

Dan also paints large panoramic works – often of political scenes, using paint and collage and usually including portraits of people he knows. There is a story behind every picture.

In December 2014 Dan contributed some pictures and stories to a performance event called 'Tales from the Ditch' at Shoreditch Town Hall. Dan enjoyed himself so much he illustrated all of the stories told. This exhibition features some of the portraits Dan drew. Look for the stories in the accompanying booklets and online at the address above.

EAST END GENERATIONS DAN JONES

**DRAWINGS
THE CHESTERFIELD CAFÉ
345 ROMAN RD, E3 5QR
7.30AM-8PM**

JOIN YOUR HOST, BAFTA AWARD WINNING WRITER ALAN GILBEY FOR AN HOUR OF TALES LESS TOLD FROM THE SIDESTREETS OF EAST LONDON SOCIAL HISTORY. THE ILLUSTRATIVE GENIUS OF LOCAL ARTIST DAN JONES AND THE VERBAL DEXTERITY OF SIX EAST END STORYTELLERS WILL COMBINE IN AN HOUR OF SHORT, FUNNY, DRAMATIC, POIGNANT AND EVOCATIVE STORIES FROM THE AREA, OFTEN TOLD IN SURPRISING WAYS.

LIMITED SPACES. PLEASE ARRIVE BY 7PM TO ENSURE YOURS, AND JOIN US FOR A DRINK BEFORE YOU'RE LED TO A DEEP DARK PIT OF STORYTELLING. NO ADMITTANCE AFTER 7.30PM





NIJOYFUL@GMAIL.COM

The painting is a reflection on a mother's dignified role of giving and nurturing new lives for the generations to be preserved further.

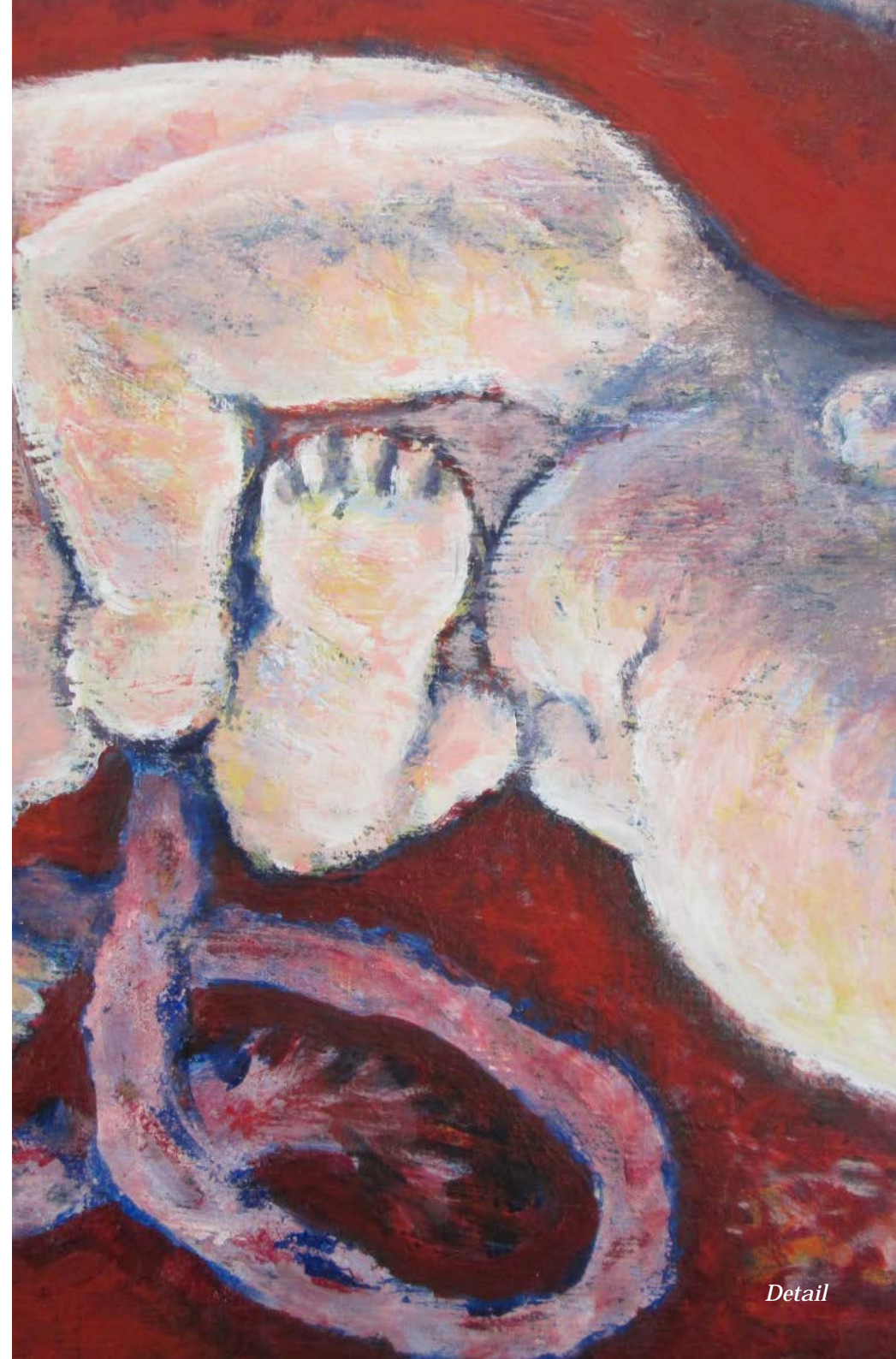
MOTHERHOOD

ELIANA MC ARCHER

PAINTING

KIKI CAFÉ, 516 ROMAN ROAD, BOW, LONDON E3 5ES

7.30AM-8PM



Detail

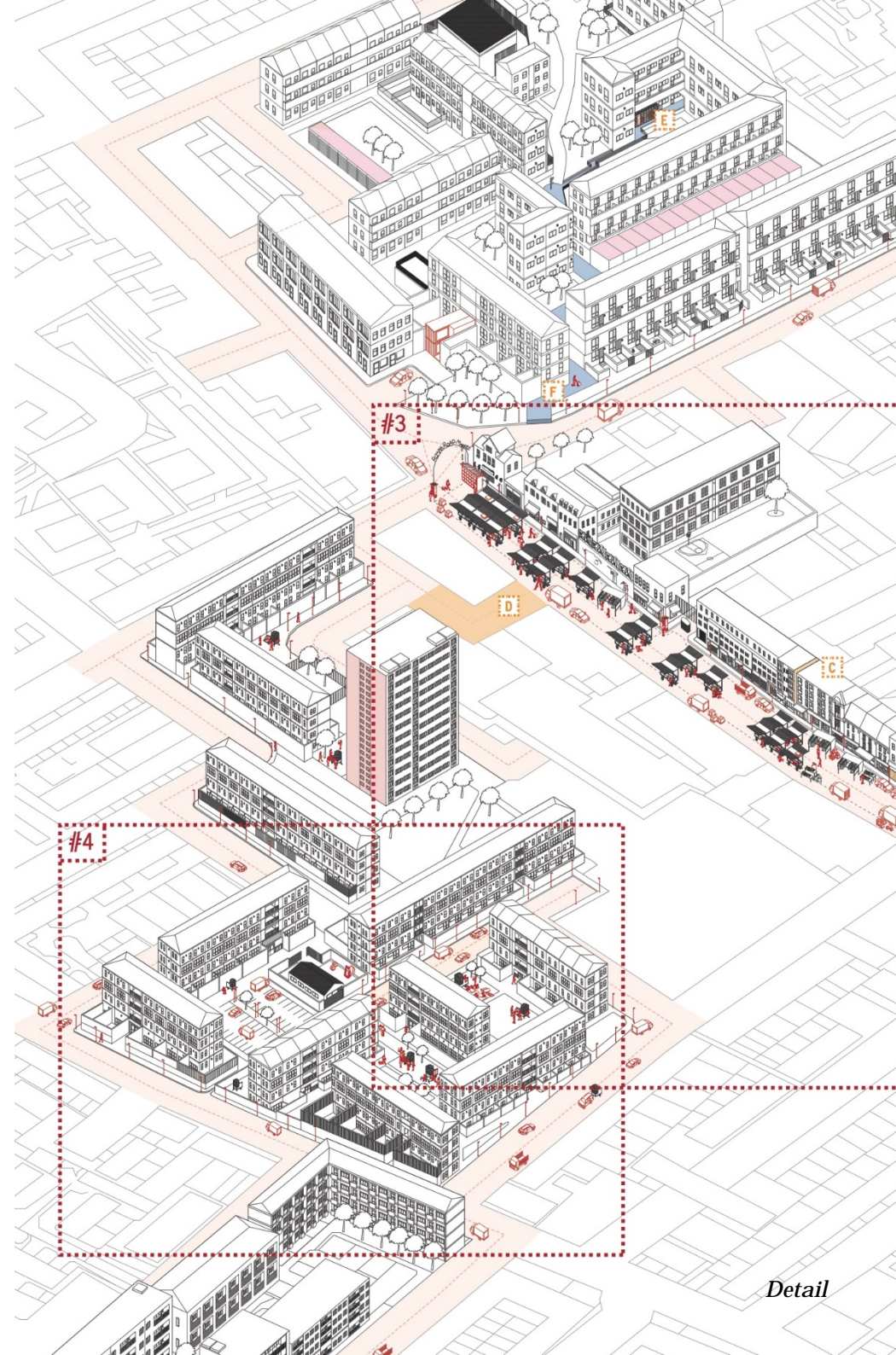
These creative maps demonstrate research outcomes where future generations who can't legally work from home can work in community spaces.

INDUSTRIOUS NEIGHBOURHOOD CARLOTTA NOVELLA

CREATIVE MAPS

HUT, INTERACT HUB, CAR PARK, FORD ROAD, LONDON E3 5NS

7.30AM-8PM



Detail

Come and find a map at the Roman Road Gazette headquarters in my black cab or at the InterAct Hub - order your geezer power products and get some wonga for the tour.

The social trail includes

Dominoes Pizza

473 Roman Road, E3 5LX

Bairstow Eves

488 Roman Road, E3 5LU

The Albert

74 St Stephens Road, E3 5JL

The City View Hotel

113 Roman Road, E2 0QN

G Kelly's Pie and Eel Shop

526 Roman Rd, E3 5ES

Poundland 580

580-586 Roman Rd, E3 5ES

Inci Food and Wine

599 Roman Road, E3 2RN

Flavas Pizza Place

612 Roman Road, E3 2RW

The Sultan Sofrasi

72 Parnell Road, E3 2RU

The Eleanor

460 Old Ford Road, E3 5JP

THE ROMAN ROAD PAST AND PRESENT PUB SOCIAL ADVENTURE

LUCY SCHOFIELD

A TRAIL WITH SURPRISES OF THE LOCAL PAST, PRESENT AND FUTURE
HUT, INTERACT HUB, CARPARK, FORD ROAD, E3 SNS

AND LUCY'S BLACK CAB: ON THE MOVE AND ON THE ART MARKET ON SAT
SATURDAYS 12-4 AND DURING OTHER FLEXIBLE TIMES





WWW.PAULTUCKER.CO.UK

This photographic study involves two community groups from Bow. The Geezers – a group of older, retired gents who have lived in the East End of London all their lives, and Factory East – a charity working with young people with a boxing gym at it's heart.

Paul's work follows the two groups for a period of time and culminates in an exhibition of two sets of pictures, portraits of the boxers and the homes of The Geezers, side by side. This provides an interesting comparison between them, especially as boxing would have been part of the older generations education and that one of "The Geezers" was a professional boxer himself after the war.

The Geezers was primarily a social group of like-minded pensioners, but it soon developed into a forum within which they could set up and run their own projects.

Some of the members of "The Geezers" allowed Paul to photograph inside their homes, spaces where objects and memorabilia evidence aspects of our lives over the years and say something about who we are.

Looking to a younger generation, Paul visited **Factory East**, an established charity that seeks to provide a focus and a space for young people. Through training and personal development in boxing, they can find solutions to the problems they may face, and looking forward, to possible future champions.

Factory East and **The Geezers** both provide a home from home for their members: two different groups of people which are juxtaposed in the final exhibition with 'generations' as the overall theme. It considers how older and younger people interact in the community and how they can support each other in different ways.

The Geezers and Factory East have worked together in the past on a project that opened a dialogue between these two groups among others, and Paul is pleased to be able highlight this here.

HOME FROM HOME PAUL TUCKER

PHOTOGRAPHY

APPIAN COURT RESOURCE CTRE

87 PARNELL RD, E3 2RS

SAT 12-4PM AND FRI 6-8PM

THE EXHIBITION WILL BE
ACCOMPANIED BY A BINGO NIGHT
FOR ALL WITH LIVE MUSIC
ACCOMPANIMENT ON FRIDAY,
29 APRIL 2016 , 6-9PM

PLEASE EMAIL
KATJAROSENBERG@HOTMAIL.COM



Who am I? Where do I come from?

*Where do I belong? Is it where I'm at?
Or is it where I'm aiming to be?*

*Who drives me? Is it my surrounding? Is it
my ancestors? Or is it actually me?*

Whose choice is this life? My life!

*Looking in the past, stumbling upon old
photographs, digging deeper into stories.
They are all mine even if I never underwent
any of it. They form me no matter what. All
generations are within me. The stories want
to be heard.*

GENERATION ME **HANNA VON BEHR**

PHOTOGRAPHIC COLLAGES / INSTALLATION
KIKI CAFÉ, 516 ROMAN ROAD, BOW, LONDON E3 5ES
7.30AM-8PM



You would never suspect, when walking round beautiful Mile End Park today, that 70 years ago the area was devastated by bombs. The park was made as part of post-WW2 reconstruction. I am amazed by the capacity of the human race to survive and even forget the horrors of war. It only takes a generation or two.

Home 1 (inspired by the Syrian conflict) connects to my childhood memories of London WW2 bombsites.

For **Home 2 – Regeneration**, the background is taken from a composite of bombed London buildings. The family survives and in time, thrives.

How the Twins cheated the Gods of Death are a reflection upon the cycle of life and death. Specifically, they honour the passing of a generation whose lives were deeply marked by the Second World War, and celebrate the birth of a new generation. They also reference a Mayan myth of death and the renewal of life. The story relates how a girl is magically impregnated with twins by a hero who has lost his joust with the Gods of Death. The twins grow up and this time, the Gods of Death are defeated.

RE-GENERATION

GINI WADE

LITHOGRAPHS
THE CHESTERFIELD CAFÉ, 345 ROMAN RD, E3 5QR
7.30AM-8PM



Detail

"I would walk up to Petticoat Lane with my Father (Phil), mainly for the exercise. It's a fair walk up the Mile End Road to Petticoat Lane and at the end I would be treated to a salt beef sandwich. On the way we would be stopped many times, as my Father had many friends and they all seemed to be out and would want to talk to him. I am afraid I got very bored, but in the East End back then, people really did know each other."

The integration and spreading of time and culture, as generations from the past spill out onto a dislocated mapping of various components of the old East End. From Stepney Green to Mile End and along the Thames; these are reflective pieces thinking about being caught in the loop of memory and returning to the roots of one's family.

MY CHILDHOOD'S FAITH JAIRO ZALDUA AND NICOLA GREEN

SCREENPRINT, COLLAGE AND INSTALLATION
INTERACT HUB, CAR PARK, FORD ROAD, LONDON E3 5NS
SATURDAYS 12-4PM AND BY APPOINTMENT



