

# SEEING IS BELIEVING

An exploration into how observation continues to shape our view of the world

★ 2-10 JULY 2016

★ ST JOHN THE  
BAPTIST CHURCH,  
LEYTONSTONE

★ PART OF THE  
LEYTONSTONE  
ART TRAIL



Leytonstone  
Arts Trail  
2nd - 10th July 2016

ARTISTS  
AND WORKS

# SEEING IS BELIEVING

## List of artists

Adams, Martin	<a href="http://stolen-image.com">stolen-image.com</a>
Bateson, Valeria	<a href="http://valeriabateson.wordpress.com">valeriabateson.wordpress.com</a>
Bedlow, Eleanor	<a href="http://elbedlow.co.uk">elbedlow.co.uk</a>
Caves, Julie	<a href="http://juliecaves.com">juliecaves.com</a>
Clarkson, Bernie	<a href="http://themakersyard.com/bernie-clarkson.html">themakersyard.com/bernie-clarkson.html</a>
French, Shelagh	<a href="http://shelaghfrench.com">shelaghfrench.com</a>
French, Eve	<a href="mailto:evefrench97@icloud.com">evefrench97@icloud.com</a>
Fyffe, Terry	Facebook: Terry Fyffe Paintings
Grove, Valerie	<a href="http://naturestrikesback.blogspot.co.uk">naturestrikesback.blogspot.co.uk</a>
Hull, Sarah	<a href="http://sarah-hull.com">sarah-hull.com</a>
Keymist, Natalie	<a href="http://nataliekeymist.com">nataliekeymist.com</a>
Lane, Michael	<a href="mailto:theartists@hotmail.co.uk">theartists@hotmail.co.uk</a>

Locke, H	<a href="http://fishescircle.com">fishescircle.com</a>
Mendes, Jose	<a href="http://jfmendesart.wix.com/jfmendesart">jfmendesart.wix.com/jfmendesart</a>
Mierau, Brigitte	<a href="http://brigitte-mierau.com">brigitte-mierau.com</a>
Overton, Yvonne	<a href="http://yvonneoverton.com">yvonneoverton.com</a>
Porter, Helen	<a href="mailto:hd.porter@ntlworld.com">hd.porter@ntlworld.com</a>
Rosenberg, Katja	<a href="http://artcatcher.co.uk">artcatcher.co.uk</a>
Snow, Domic	<a href="http://dominicsnow.com">dominicsnow.com</a>
Stanley, Alice	<a href="http://alicestanleyart.com">alicestanleyart.com</a>
	<a href="http://orangemonkeypuppets.com">orangemonkeypuppets.com</a>
Whitman, Rosalind	<a href="http://www.rosalindwhitman.com">www.rosalindwhitman.com</a>
Zappone, Siset	<a href="http://sissetazappone.com">sissetazappone.com</a>
Zieniewicz, Basia	<a href="mailto:b.m.zieniewicz@gmail.com">b.m.zieniewicz@gmail.com</a>



# MARTIN ADAMS

## BOLDLY GOING, TRAVELS WITH MY PALE BLUE DOT

Mixed media mobile

4x4m

POA

The satellite Voyager 1 left solar system in 2012 on a voyage of discovery to the greater universe, it was launched in 1977, with luck it will still be sending us data till 2036 when it is estimated its power will run out. On its journey it took pictures of amongst other planets, the earth, which the scientist Carl Sagan termed "a pale blue dot".

But Voyager is not just a satellite it is the embodiment of our culture, in effect it takes our world with it. It is a rejection of the limitations of the human spirit, it is instead the embodiment of the desire to know, to explore, to discover, and it has set its sights on the universe, there could be nothing bigger.



# VALERIA BATESON

## BLACK HOLES MERGING

Mixed media on paper

45x55cm

£150 framed, £90 unframed

A merger of two black holes recently caused a spike in gravitational waves, enabling scientists to measure them for the first time. Very exciting, since Einstein predicted gravitational waves a hundred years before but nobody had ever before detected them. Seeing the event and measuring the spike it caused confirms Einstein's theory.

I found it hard to imagine the waves that alternately stretch and compress our space and time, so instead I tried to imagine the black holes merging, a violent event literally making waves through us, our world and our universe.



# VALERIA BATESON

## TARANTULA NEBULA

Mixed media on paper

56x76cm

£150 framed, £90 unframed

The Tarantula Nebula is one of the nearest star-forming regions near the Milky Way. Glowing filaments of dust resemble the legs of a spider. Sometimes called a nursery of stars, its very bright, hot young stars create huge voids and filaments in surrounding clouds of gas. Its study can reveal more about the early universe. Seeing it we can believe in the birth and life cycle of stars. But I just find the Hubble Telescope's images of it very beautiful.



# VALERIA BATESON

## CRAB NEBULA

Mixed media on paper

56x76cm

£150 framed, £90 unframed

The Crab Nebula is the remnant of a supernova explosion and pulsar wind nebula in the constellation of Taurus. Chinese astronomers recorded the bright supernova in 1054, the first identified historical supernova explosion. Seeing it now we can believe what happens after a star dies.

At its centre is a rapidly rotating neutron star that emits pulses of radiation useful to astronomers for studying celestial bodies that pass through its waves.



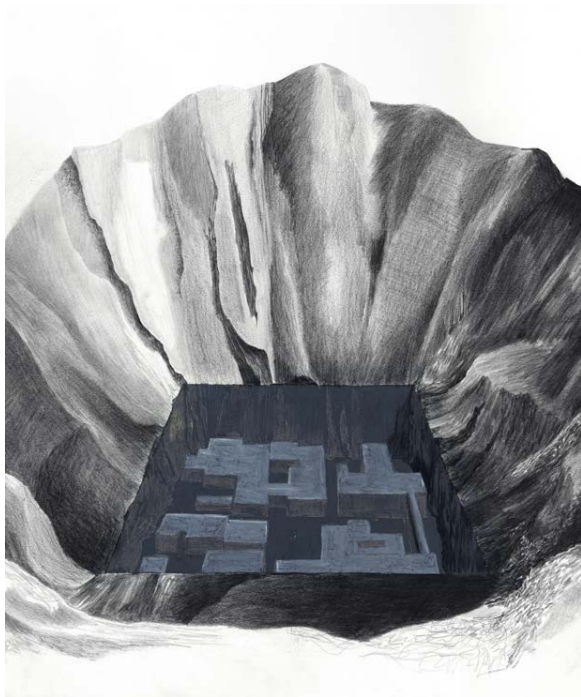
# ELEANOR BEDLOW

## CAVERN

Pencil and oil pastel on paper,  
84.2x64.5cm  
£430 framed

I make work in response to the relationship linking humans with landscape. I create imagined structures and landscapes outside the boundaries and restrictions of reality.

In this piece I had been experimenting with combining the monochrome marks of the pencil with the surface the oil pastels work with each other.



# ELEANOR BEDLOW

## ISOLATION

Pencil and oil pastel on paper,  
84.2x64.5cm  
£430 framed

In this piece I had been experimenting with combining the monochrome of the pencil with colour, using oil pastel. I am playing with different landscapes and foundations for isolated clusters of habitations.





# JULIE CAVES

## EVENT HORIZON

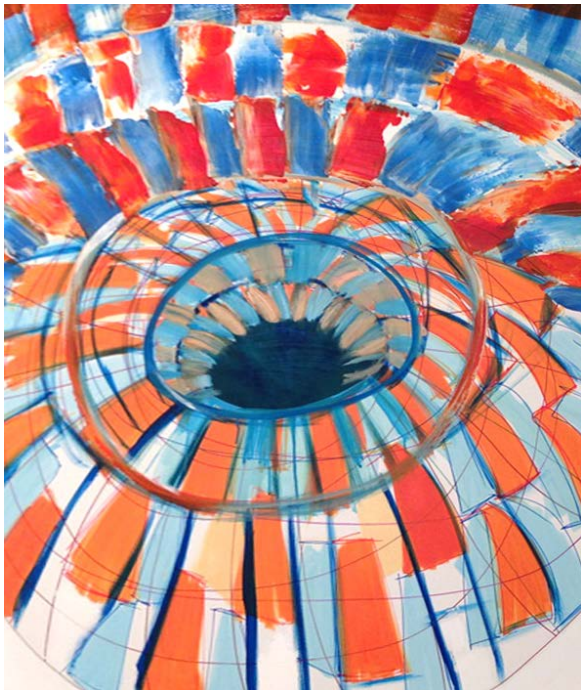
Acrylic on canvas

100x100cm

£400

The confirmation of Einstein's theory of gravitational waves is just one of many ideas related to physics that lend themselves to exploration using painting: the space between particles is not empty, shape is determined by motion, particles and waves, and intertwined strings.

An 'event horizon' is the edge of a black hole, the border past which nothing can be seen and nothing can escape.



# JULIE CAVES

## SINGULARITY

Acrylic on canvas  
100x100cm  
£400

The confirmation of Einstein's theory of gravitational waves is just one of many ideas related to physics that lend themselves to exploration using painting. In physics a 'singularity' is a point or region in spacetime in which gravitational forces cause matter to have an infinite density; the initial state of the universe, at the beginning of the Big Bang, was a singularity.



# JULIE CAVES

## INDEPENDENT THOUGHT

Acrylic, resin, plastic  
40x40x40cm  
NFS

Colour, light, movement and a changeable organic shape. Like a space creature pulsating through the heavens or through the sunbeams penetrating the oceans. Made especially for the space in front of the church's lancet windows, it needs to interact with the light.



# BERNIE CLARKSON

## THE WAVES DRAW BACK

Oil on canvas  
76x102x2cms  
£1500

The connection of my work to the exhibition is with the theme of gravity as the waves are drawn back by the gravitational pull of the moon.

At the same time, notions of home, the theme of my own work at the moment, create its own sense of gravity as we are pushed and pulled to seek a sense of home.



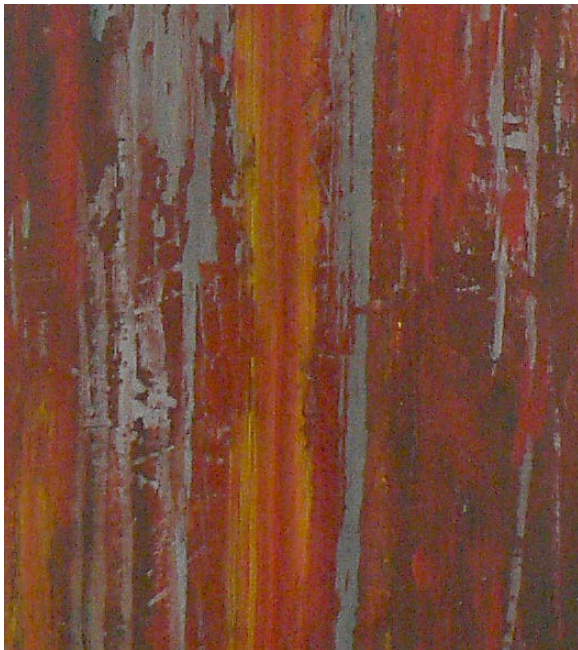
# SHELAGH FRENCH

## RUST

Oil on steel  
124x49cm  
POA

I have chosen some of my works that have a contemporary view of things within our nature and our surroundings everyday, yet are often overlooked or ignored.

Based within the landscape these works attempt to be contemplative and give the onlooker space to consider.



# SHELAGH FRENCH

## RAIN

Glass paint on Aluminium

189x31cm

POA

I have chosen some of my works that have a contemporary view of things within our nature and our surroundings everyday, yet are often overlooked or ignored.

Based within the landscape these works attempt to be contemplative and give the onlooker space to consider.





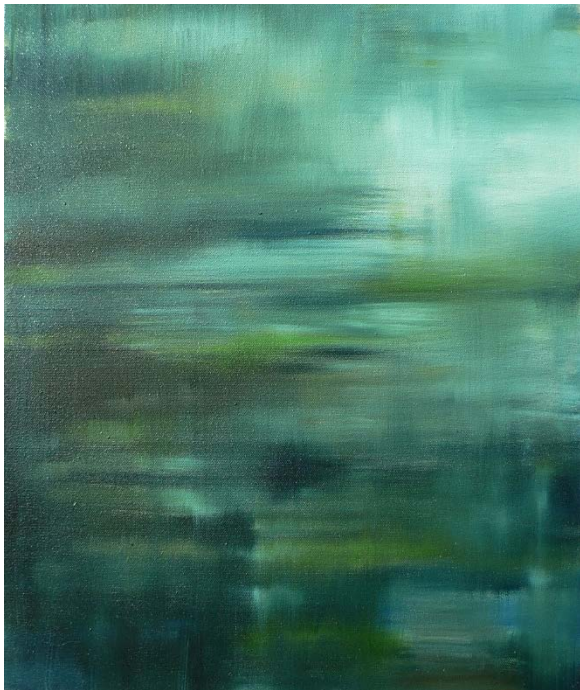
# SHELAGH FRENCH

## KNIGHTON BLUE

Oil on Aluminium  
100cX60cm  
POA

I have chosen some of my works that have a contemporary view of things within our nature and our surroundings everyday, yet are often overlooked or ignored.

Based within the landscape these works attempt to be contemplative and give the onlooker space to consider.



# SHELAGH FRENCH

## KNIGHTON RED

Oil on Canvas

41cm x 51cm

POA

I have chosen some of my works that have a contemporary view of things within our nature and our surroundings everyday, yet are often overlooked or ignored.

Based within the landscape these works attempt to be contemplative and give the onlooker space to consider.





# SHELAGH FRENCH

## SEA

Oil on Aluminium

100cm x 60cm

POA

I have chosen some of my works that have a contemporary view of things within our nature and our surroundings everyday, yet are often overlooked or ignored.

Based within the landscape these works attempt to be contemplative and give the onlooker space to consider.



# EVE FRENCH

## JOURNEY TO THE STARS

Variable edition of 7 lino cuts

Various Sizes

POA

*Two things awe me most, the starry sky above me  
and the moral law within me.*



# SHELAGH FRENCH

## KNIGHTON RED

Oil on Aluminium

100cm x 60cm

POA

I have chosen some of my works that have a contemporary view of things within our nature and our surroundings everyday, yet are often overlooked or ignored.

Based within the landscape these works attempt to be contemplative and give the onlooker space to consider.



# TERRY FYFFE

## SHIELD OF FAITH

Acrylics  
50x95cm  
£5000

This painting is part of a series of works dealing with consciousness. It derives from my experience with meditation.

The biomorphic shapes conform to the pattern of gravitational waves recently detected by the Ligo Project that ratify Einsteins general Theory of Relativity, a combination of spiritual insight and scientific investigation that affirms the "Oneness of all Creation".

The title refers to the letter of Saint Paul to the Ephesians Chapter 6 Verses 11-17:  
Saint Paul is urging Christians to protect themselves from the spirits of evil by putting on the armour of God..."always carrying the shield of faith so that you can use it to put out the burning arrows of the Evil One".  
Saint Paul taught that Sovereignities and Powers opposed to God originate the darkness in this world.



# VALERIE GROVE

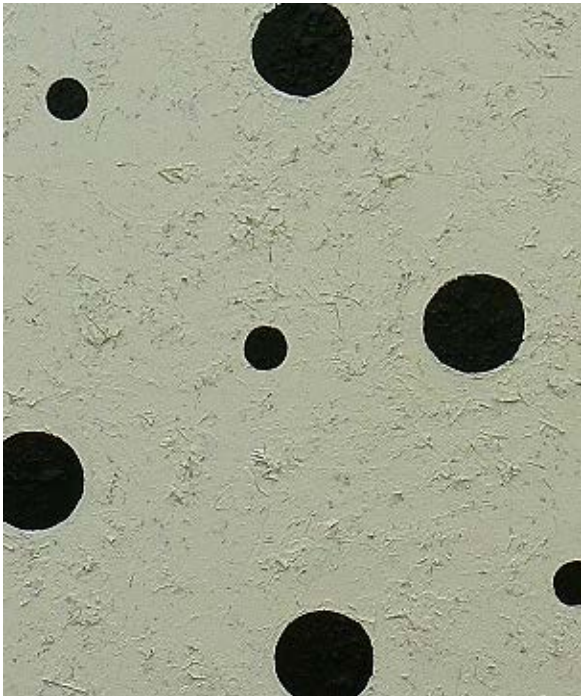
## BLACK HOLES

Mixed media on canvas

75x50cm

£280

Things look different from a distance and the human eye imposes prior knowledge to help it comprehend. Holes seem like perfect circles. Surfaces may seem flat. Light next to black appears brilliant white. Get close and it's never that simple.



# VALERIE GROVE

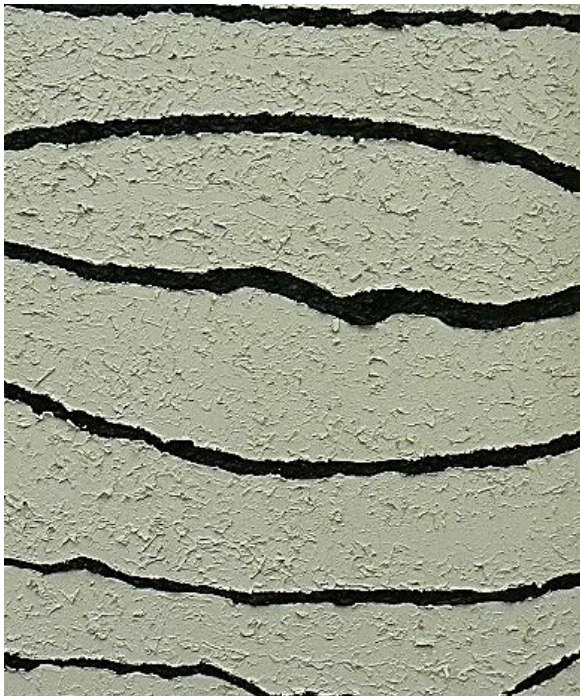
## STRATA

Mixed media on canvas

75x50cm

£220

Things look different from a distance and the human eye imposes prior knowledge to help it comprehend. Holes seem like perfect circles. Surfaces may seem flat. Light next to black appears brilliant white. Get close and it's never that simple.



Detail

# SARAH HULL

## SINGULARITY

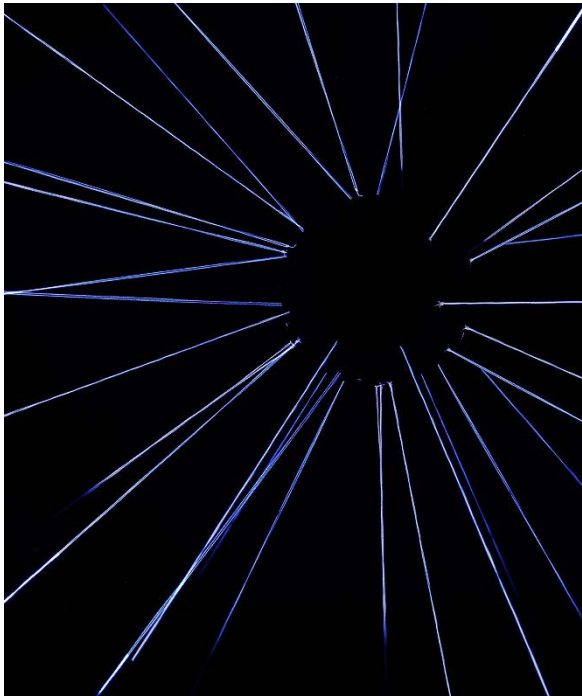
C-type print

59.4x42cm

£150 framed, £70 unframed

Confirmations of the existence of gravitational waves were always indirect before September 2015 when scientists detected the waves produced by the collision of 2 black holes. This series of work refers to progressions in physics contributing to the understanding of Supermassive Black Holes which scientists believe exist at the centre of every galaxy.

Although these objects are integral to how the universe behaves, scientists have a limited understanding of how they work due to the fact they can't directly observe them. They can now listen to gravitational waves in order to learn more about black holes and other objects producing them, this idea of observing one phenomenon to learn about another is an important part of my work.





# SARAH HULL

## SHADOW

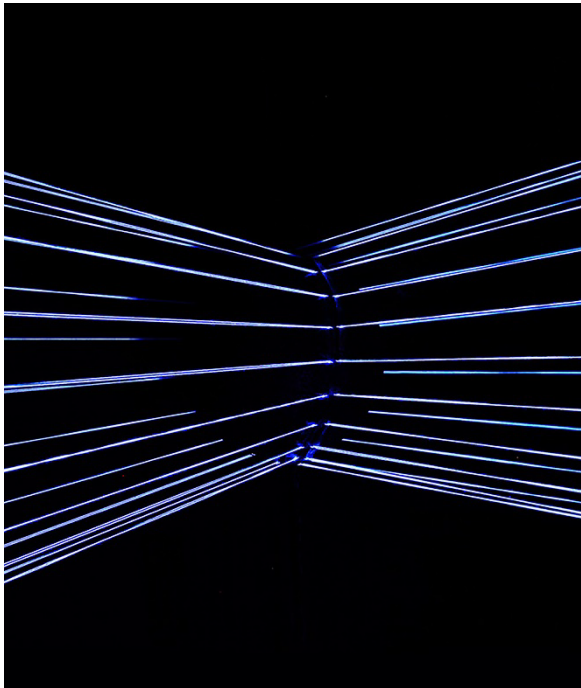
C-type print

59.4x42cm

£150 framed, £70 unframed

Confirmations of the existence of gravitational waves were always indirect before September 2015 when scientists detected the waves produced by the collision of 2 black holes. This series of work refers to progressions in physics contributing to the understanding of Supermassive Black Holes which scientists believe exist at the centre of every galaxy.

Although these objects are integral to how the universe behaves, scientists have a limited understanding of how they work due to the fact they can't directly observe them. They can now listen to gravitational waves in order to learn more about black holes and other objects producing them, this idea of observing one phenomenon to learn about another is an important part of my work.





# SARAH HULL

## VACUUM

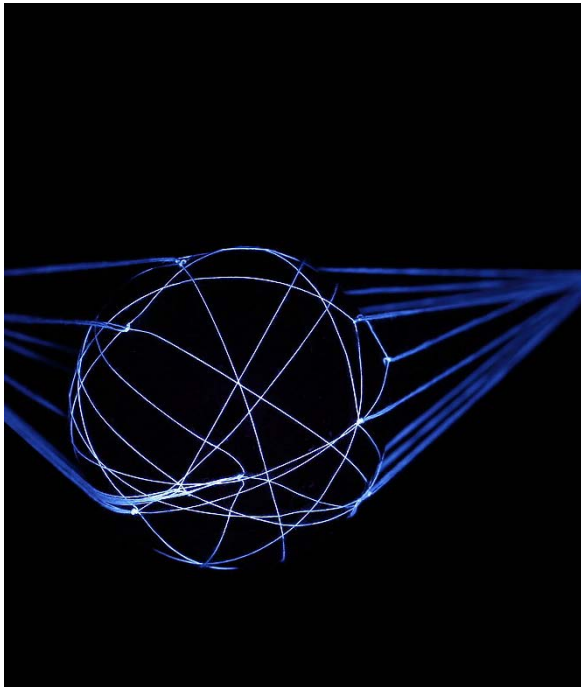
C-type print

59.4x42cm

£150 framed, £70 unframed

Confirmations of the existence of gravitational waves were always indirect before September 2015 when scientists detected the waves produced by the collision of 2 black holes. This series of work refers to progressions in physics contributing to the understanding of Supermassive Black Holes which scientists believe exist at the centre of every galaxy.

Although these objects are integral to how the universe behaves, scientists have a limited understanding of how they work due to the fact they can't directly observe them. They can now listen to gravitational waves in order to learn more about black holes and other objects producing them, this idea of observing one phenomenon to learn about another is an important part of my work.



# NATALIE KEYMIST

## OBJECTIFYING SENSES

Hybrid Photography and mixed media  
5 images 25x20cm each  
£50 framed, £30 unframed

Each image is of an object used to facilitate one of the five senses. As humans there is a lot that can divide us, however one of the things that unite us all is the biology of our senses despite our differing preferences.

I represent the uniting of cultures by researching the use of Aboriginal art techniques with the bright colours used in African and Indian art and marbling that has its roots in Japan and Europe.



# MICHAEL LANE

## THE DODGE CITY COWBOY BAND

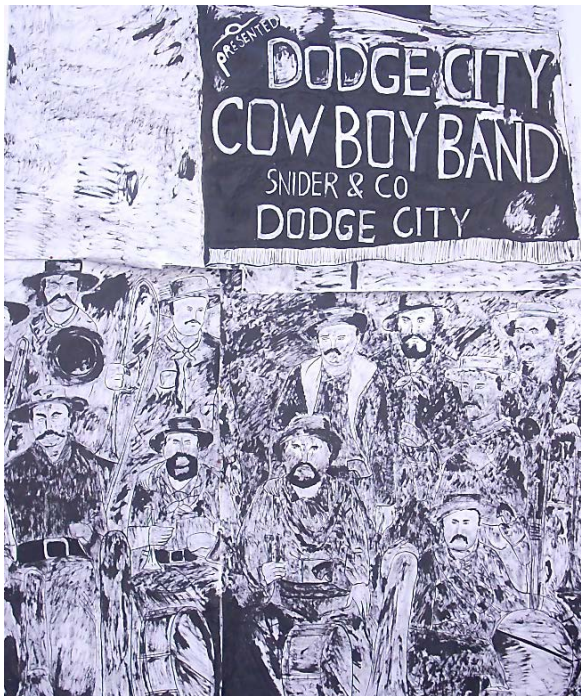
Ink Drawing

360x180 cm

POA

My ideas came from an old redundancy letter from the 'Epping Empire Cinema' written to my Grandfather in 1929 explaining that he was no longer needed as a silent movie western film pianist because of the discovery of the talking cinema.

As a symbol of eternal youth and adventure I believe that for every child and every adult, the cowboy occupies a permanent spot in a person's heart from which he is not likely to be unseated.



# H LOCKE

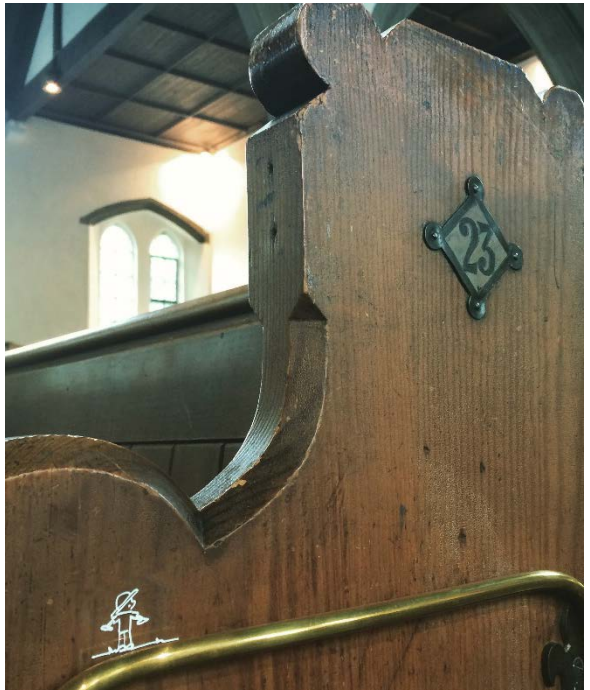
## THE JOURNEY

Mixed media

Variable dimensions

NFS

This drawing installation runs along the sides of the pews inside the church. It shows a character-based narrative, examining the direct relationship between the individual and the belief.



# JOSE MENDEZ

## CENTRAL ENERGY

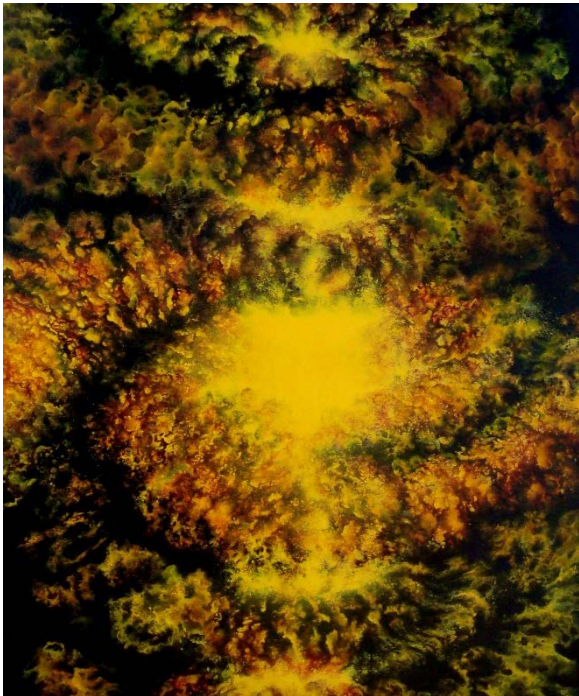
Acrylics on canvas

98x66cm

£950 framed

I take inspiration from the cosmos and its dynamics, the exploration of the energy and matter that shape our universe. The universe is constituted by elements as gravity, electromagnetic and nuclear force that shape and build the great cosmic architecture. These forces are the causing of destruction and creation that are the two sides of the same coin.

These events show true works of art that are caught by our satellites and telescopes. It is this energy in its purest state which I am aim to capture in all its strength and splendour.





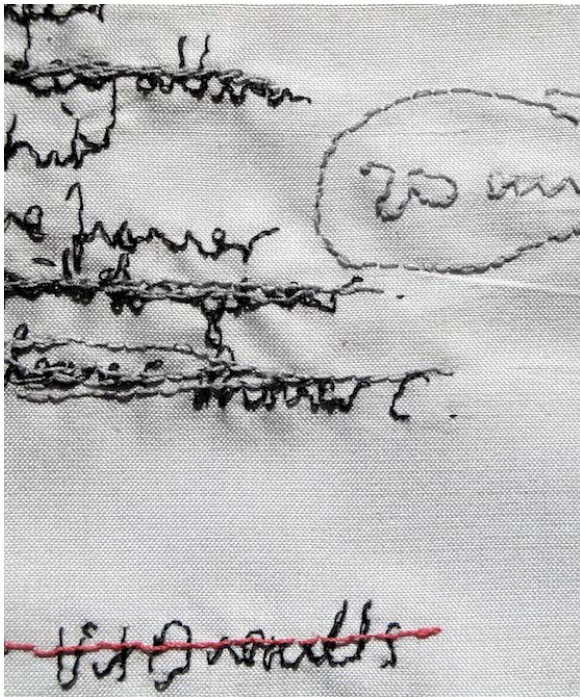
# BRIGITTE MIERAU

## TO DO OR TO PROCRASTINATE – THAT IS THE QUESTION

Textile installation  
Variable dimensions  
Sold

In our goal-orientated world, the to-do list is the king of lists: a tool for achievement (or procrastination: "I could do this now but will put it on the list instead").

These handstitched lists are a celebration of those undistinguished moments when our intentions first manifest on paper. They are based on genuine to-do lists from a variety of professionals. Six of them are forward looking and one, the search for a family tree, is looking backward.



# YVONNE OVERTON

## BELIEVE IT, OR NOT

Acrylic and ink on wallpaper  
180cmx60cm  
POA

When I started to think about the exhibition theme I had ideas around the Francis Thompson poem about universal connections. From my early preparatory studies of flowers floating above cosmic chaos, other influences have emerged and ideas and images from personal influences have fed into the painting.

The duality of the mask, and what hides beneath, has become part of the story.

"All things by immortal power,  
Near or far,  
Hiddenly  
To each other linked are,  
That thou canst not stir a flower  
Without troubling of a star."



# HELEN PORTER

## THE SPECS

Moulded cotton paper  
20x20cm  
€40

The elements of vision are made up of light and perception. Human understanding relies on the whole picture. If we don't have enough to go on, we may fill in the blanks.

This piece was made at PULP paper workshops in Glasgow using a plaster mould formed from a pair of my glasses. The paper pulp was made from cotton rag beaten in a Hollander beater.





# KATJA ROSENBERG

## ENCHANTMENT IN THE EAST

Digital print and papercut  
30x20 cm on average  
POA

In 1920 a series of photos of fairies captured the attention of the world. The photos had been taken by the cousins Frances Griffith and Elsie Wright, while playing in the garden of Elsie's Cottesloe village home. Experts examined the pictures and declared them genuine. Spiritualists promoted them as proof of the existence of supernatural creatures, and despite criticism by skeptics, the pictures became among the most widely recognized photos in the world. It was only in the late 1970s that the photos were definitively debunked.



# DOMINIC SNOW

## WE ARE PEOPLE: ELEPHANT



Concrete  
62cm height  
£400

"People live in houses, unlike elephants, who live in the street" Viz circa 1990. You can't believe everything you read in comics, but I want to make part of this statement a reality. Seeing is believing! These elephants are part of a project to put a large number of elephants around London. When there are enough a treasure hunt will take place which will raise money for charities doing good work preserving elephants in Africa and Asia. If you save the habitat for elephants, you save it for everything else, so keep a sharp eye and you might see some small concrete ones in London. Animals are people that we don't understand yet, but one day I believe we will.



# ALICE STANLEY

## DAY & NIGHT, DARK & LIGHT

Fabric collage

73x53cm

£190

The contrasts are fascinating to me as when we think & go deeper into every day ordinary things we can learn so much more - about ourselves as well as the world around us - is it possible to get more into the core of things when we search, seek, knock - can we find out.?

I believe so.



# ROSALIND WHITMAN

## VIRGIN IN THE BURNING BUSH

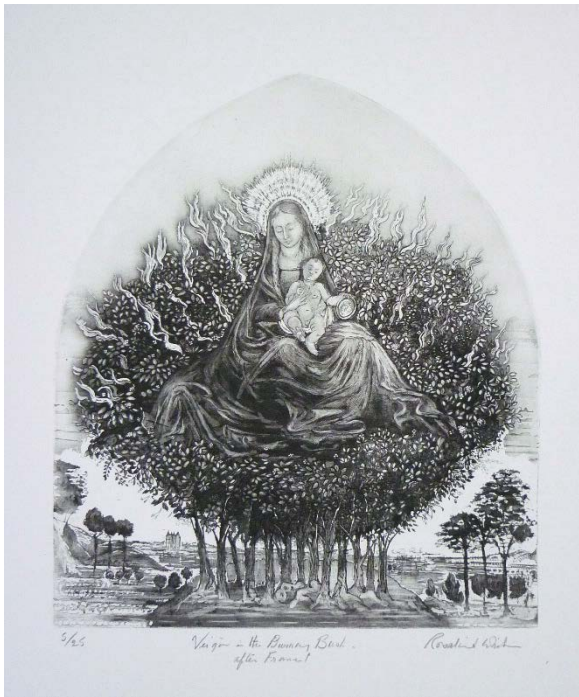
Etching with aquatint

45x39cm

£300 framed, £230 unframed

This etching was inspired by the late medieval painting 'Mary in the Burning Bush' (c. 1461) by Nicolas Froment. In reworking his concept I wanted to mirror the encounter with the feminine image as this reflects the imaginative domain, combining a response to beauty in nature with the portrayal of a visionary experience, an illuminated 'inner world' of spiritual contemplation.

Interior and exterior worlds depicted together, express the pre-enlightenment perception that the spiritual and the substantial are co-existent phenomena.



# SISSETTA ZAPPONE

## COSMIC REFLECTIONS

### **Celestial Arches & Star Swing (Diptych)**

2 etched iron plates, 35x80x28cm, £1500 each

2 prints on gampi paper 35x150cm, £300 each unfr.

### **A Solar System**

Monotype on gampi paper 100x200cm

£1000 unframed

This pieces of work I created during an art residency based on Astronomy. It is an installation including two arched iron plates and two prints pulled from them. It was ideal for me to investigate the subject of the Cosmos and the Stars.

As my practice is grounded in Historiographic research, I have studied manuals and codes about the subject, becoming familiar with star maps and entering the dimension of a more aware star gazing.

I normally etch on zinc or copper plates. For this residency I used a metal more strongly connected to planets and their chemistry so I used iron. I also decided their shape should respond to the universe's geometry... so I made them arched, because everything in space moves in elliptical orbits. All stars are constantly rising and setting around us in circular movements. I choose to represent the constellations that were more visible from Atina, identified their schemes and traced their paths.

Watch the making process of the artwork at: <https://vimeo.com/146047874>



# BASIA ZIENIEWICZ

## INSTITUTION EVOLUTION EVLOVE

Triptych of photographic prints

40x60cm each

£75 each, £210 for the set

\* #INSTITUTION EVOLUTION #EVLOVE, is part of a social media campaign to save the East London music venue Passing Clouds from developers. Through working with and documenting the venue staff, the music artists, the founder, the guests and local supporters, another side to the shots began to emerge. An over arching sense of Love, Acceptance, and Belief in their campaign and purpose - through the music, sharing of food and exchange of ideas, collectively creating an atmosphere of a holy and sacred space.

I wanted to highlight the vibrant colours and atmosphere found in the people, the music and the venue. Inspired by Gered Mankowitz's Hendrix shoots, instead of adding colours, I used black and white filters and then painted the already existing colours back in. All the colours you're seeing are really there, even Sun-Ra's 'rose tinted' lenses.

Seeing is believing. In the words of Berger, to look is an act of choice.

